



ANNUAL REPORT

2021-
2022



CONTENTS

President & CEO Report	3
Our Members.....	4
Our Structure.....	5
Proposed Merger.....	10
Professional Development & Certification.....	11
Collaboration & Partnerships.....	17
Recognition & Celebration.....	21
Our National Board.....	26
Financials.....	27

WE ACKNOWLEDGE AND RESPECT
TRADITIONAL OWNERS AS THE ORIGINAL
CUSTODIANS OF AUSTRALIA'S LAND AND
WATERS, THEIR UNIQUE ABILITY TO CARE
FOR COUNTRY AND DEEP SPIRITUAL
CONNECTION TO IT. WE HONOUR ELDERS
PAST AND PRESENT WHOSE KNOWLEDGE
AND WISDOM HAS ENSURED THE
CONTINUATION OF CULTURE AND
TRADITIONAL PRACTICES.

PRESIDENT & CEO REPORT



Paul Digney

The focus for SSSI over the past 12 months has been the proposed merger with SIBA|GITA. Though we are proud of the work SSSI has done in representing surveying and spatial professionals, being one voice representing both geospatial professionals and organisations will enable us to do so much more. This includes achieving our objectives of expanding the sector to create more opportunities, addressing the skills shortages and creating national skills and career pathways.

We want to do more for our members.



Tony Wheeler

SSSI is no stranger to being part of a merger. It is how we were formed some 13 years ago with the merging of the Spatial Sciences Institute (SSI) and the Institution of Surveyors (ISA). At the time, the major factor championing this merger was the Federal Government's Spatial Information Industry Action Agenda, which called for a unified voice for surveying and spatial sciences professionals. The intent was to create a strong, unified voice for the surveying and spatial sciences profession, with an ability to better serve its members. It's time we broaden our representation and purpose.

By merging SSSI and SIBA|GITA and creating a geospatial peak industry body, we can do more for our sector. We become a powerful voice that represents both professionals and organisations and we create a stronger foundation for sustainable sector growth. After consultation with members and the wider geospatial sector we have been overwhelmed by the support shown for this potential merger occurring.

SSSI members will have the opportunity to vote for the proposed merger at the upcoming AGM on 21 November 2022. If the proposed merger proceeds, members will continue to receive the many great services and benefits already afforded - whether it be attending webinars or face to face events, participating in the mentoring, graduate or coaching programs or acquiring certification. We will continue to seek our members expertise on various committees and celebrate achievements through excellence awards or through the conferment of fellowships— these great services will all continue and grow to be even better.

Once again, the past year has been filled with lots of highlights, many of which are detailed in this Annual Report. The main highlight for us has been to reconnect with members at face to face events. We are seeing record number of attendees at all our events and our membership has grown by a modest 5 per cent over the financial year.

SSSI would be a shadow of itself if not for the dedicated volunteers who commit hours each year to SSSI. Whenever there is a call to action for assistance, advice or leadership we are very fortunate the have a strong band of volunteers we can turn to. We cannot thank you enough for your energy and interest.

We look towards the next 12 months with great anticipation and excitement. Vote in the upcoming AGM and determine the future direction of SSSI. We look to the future with great optimism and enthusiasm.

Paul Digney, President

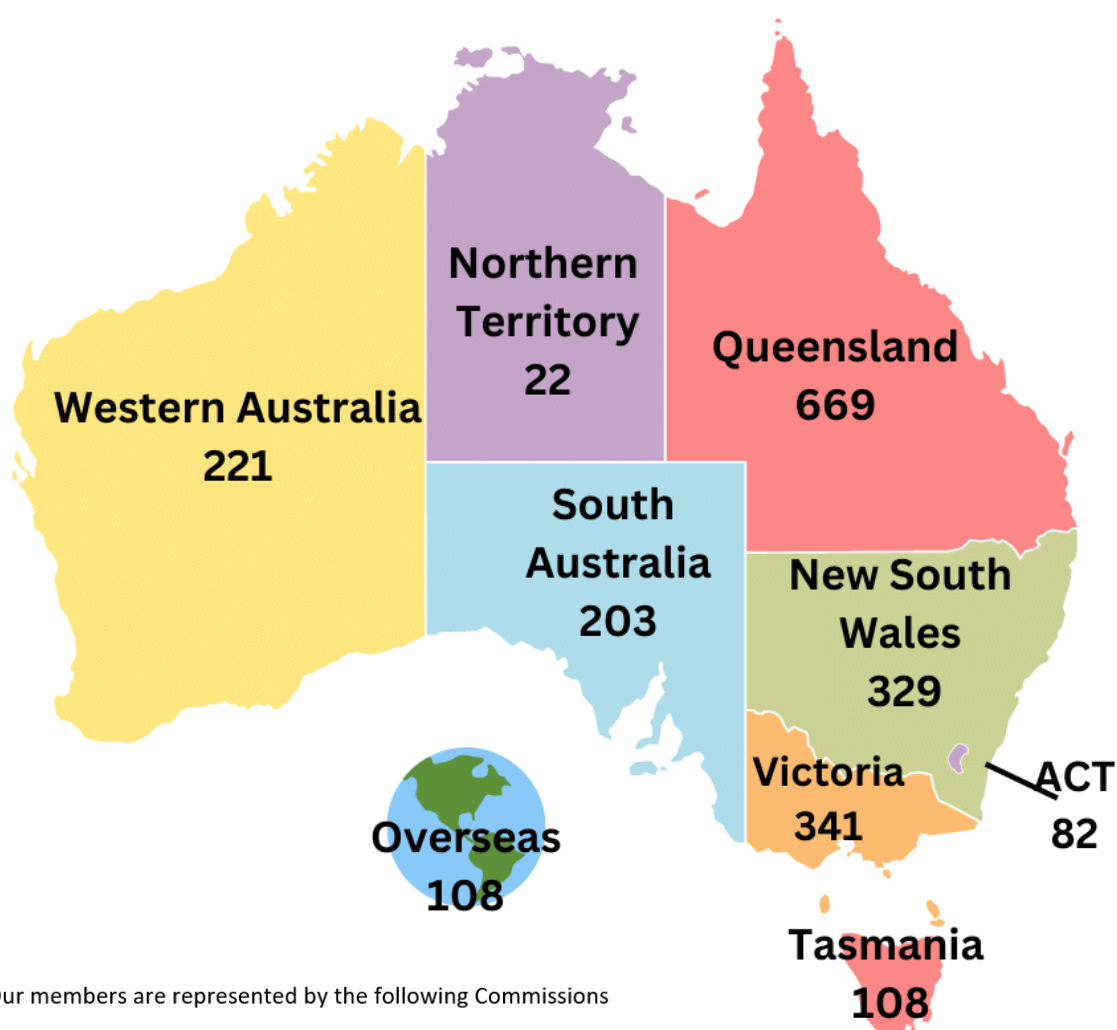
Tony Wheeler, CEO

OUR MEMBERS

The Surveying & Spatial Sciences Institute (SSSI) is the peak national body for all custodians of quality spatial (location) data creation, storage, maintenance and use in Australia.

What sets SSSI apart is its unique national reach, which enables us to: advocate on behalf of the profession; to overcome geographic silos and build technical excellence, offer a plethora of events which enable a diverse network of professionals to network and collaborate, promote certification to strengthen the skills and knowledge of the Australian geospatial and surveying industry, provide professional development opportunities, carry out migration skills assessment and much more.

SSSI is proud to represent the surveying and spatial community in Australia and overseas. By 30 June 2022, SSSI had a total of 2,083 members located in Australia and overseas.

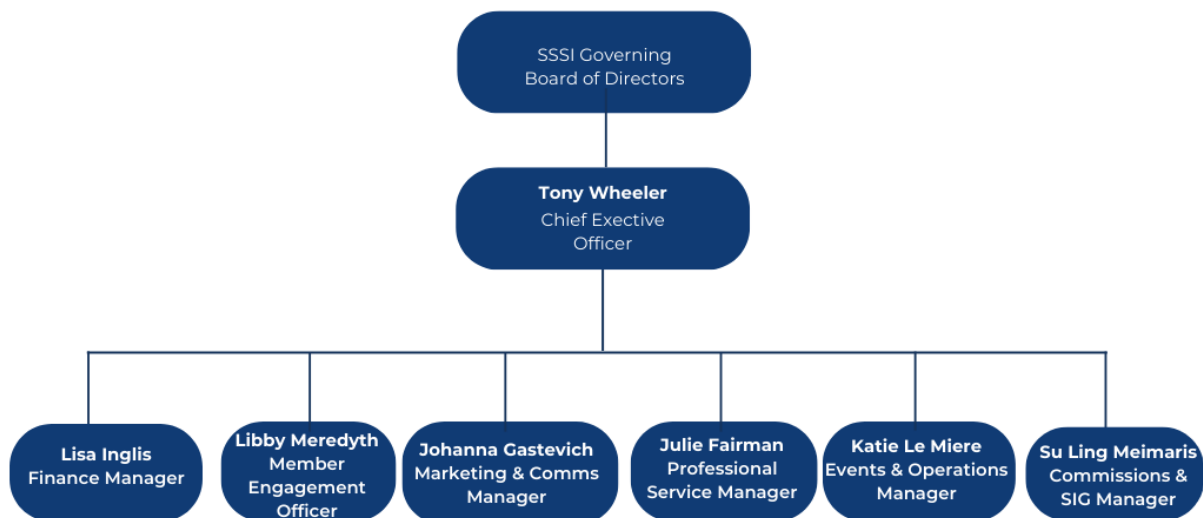


Our members are represented by the following Commissions

Commission	Total
Land Surveying	750
Spatial Information & Cartography	566
Engineering & Mining	438
Hydrography	206
Remote Sensing & Photogrammetry	94
TOTAL	2083

OUR STRUCTURE

STAFF



COMMISSIONS

Land Surveying <i>Chair: Lee Hellen</i>	Spatial Information & Cartography <i>Chair: Robert Campbell</i>	Remote Sensing & Photogrammetry <i>Chair: Petra Helmholtz</i>	Hydrography <i>Chair: Neil Hewitt</i>	Engineering & Mining Surveying <i>Chair: Andrew Edwards / Andrew Barkham</i>
---	---	---	---	--

SPECIAL INTEREST GROUPS

Young Professionals <i>Chair: Donny Darmawan</i>	Spatial Digital Twins <i>Chair: Wayne Patterson</i>	Disaster Management & Recovery <i>Chair: Lesley Arnold</i>
--	---	--

REGIONS

Tas Region Committee <i>Chair: Inga Playle</i>	WA Region Committee <i>Chair: Darren Mottolini</i>	QLD Region Committee <i>Chair: Noel Davidson</i>	VIC Region Committee <i>Chair: Richard Syme</i>
NSW Region Committee <i>Chair: Roshni Sharma</i>	ACT Region Committee <i>Chair: Noel Ward</i>	SA Region Committee <i>Chair: Graham Walker</i>	

Our Commissions

Our Institute consists of five Commissions – representing various disciplines within the surveying and spatial profession.

SPATIAL INFORMATION & CARTOGRAPHY	
Our priorities <ul style="list-style-type: none"> Develop and deliver an ongoing Continuing Professional Development (CPD) program that offers members opportunity to grow and maintain their spatial information and cartographic skills. Nurture beneficial external relationships with other professional organisations both nationally and internationally. Support the development of spatial literacy and skills within the wider community, especially supporting secondary and tertiary spatial education programs. Promote and encourage the use of authoritative and accessible spatial information in decision-making to serve the goals of society. Promote the spatial information profession and the services it. 	Our National Committee Robert Campbell (Chair) Austen Pepper Donny Darmawan Renee Coysh Liz Fulton Angus Scown Brendan Tully Melinda Borg Kerry Smyth David Kelly Jonathan Briere
LAND SURVEYING COMMISSION	
Our priorities <ul style="list-style-type: none"> Progress national and regional understanding and the development of policy in the following areas: <ul style="list-style-type: none"> Position and Autonomous Surveying Techniques - Cadastral Technologies, Spatial Digital Twins and BIM Professional Education, Mentoring & Competency Assessment Best Practice Cadastral harmonisation Working Group. Increase the public's understanding of the surveying profession and to better navigate change that recognises new skills and opportunity in a new frontier for surveying via Project Sirius. Champion a recognised national competency framework for Cadastral Surveyors. 	Our National Committee Lee Hellen (Chair) Steve Hogan Amy Peterson Anna Riddell Ian Harper Alex Bakunowicz Rob Sarib Paul Reed Peter Murphy Joe D'Aloia Michael Nietschke Michael Giudici Geoffrey Patterson Lindsay Perry Heath McMahon Matt Duckham Murray Dolling
ENGINEERING & MINING SURVEYING	
Our priorities <ul style="list-style-type: none"> Review and update the Engineering and Surveying Practice Asia Pacific (ESP-AP) procedures manual and application form. Promote the importance of ESP-AP certification to employees and employers. Include ESP-AP specifications in government tenders. Provide Continuing professional development and learning opportunities for engineering and mining surveyors. 	Andrew Edwards / Andrew Barkham (Chair) Darryl Gowlett Noel Davidson James Papadopoulos Paul Digney Samuel Griffiths Paul Andrews David Belton Tony Snow

HYDROGRAPHY	
Our priorities <ul style="list-style-type: none"> • Hydrography CPD assessment. • Develop a Hydrography Education Working Group to facilitate better engagement with universities. • Promote hydrography as a career option for prospective students. • Implement the Hydrographic coaching program. • Industry recognition via the Hydrography Excellence Award. • Develop ongoing professional development opportunities for the profession. 	Our National Committee Neil Hewitt (Chair) Paul Kennedy Owen Cantrill Adam Muckalt Jasbir Randhawa John Maschke Ian Jackson Celine Roux Martin Tunwell Andrew Bembrick Jennifer Brindle Stuart Edwards Nathan Greene Samuel Houston David Field Simon Ironside Stuart Cale
REMOTE SENSING AND PHOTOGRAMMETRY	
Our priorities <ul style="list-style-type: none"> • Maintain remote sensing and photogrammetry professionalism and their applications in Australia. • Provide the remote sensing and photogrammetry community with relevant professional development opportunities, promote certification and recognition of peers. • Highlight important research agendas. • Represent Australia in the International Remote Sensing and Photogrammetry Communities. 	Our National Committee Petra Helmholz (Chair) Gypsy Bhalla Amy Steiger Mary-Ellen Feeney Bruce Forster Renee Bartolo Tyson Hillyard Samuel Holt Jagannath Aryal Chris Bellman



Our Special Interest Groups

Special Interest Groups (SIGs) are convened by the SSSI National Board to champion a specific issue or matter of importance to the profession. SSSI currently has three active SIGs consisting of members and other influential members of the geospatial profession.

YOUNG PROFESSIONALS	
Our Priorities <ul style="list-style-type: none"> • Facilitate communication and networking among young professional and student members nationally and regionally. • Deliver events which are relevant to the students and young professionals in our industry. • Develop and maintain a vibrant and effective mentoring programs. • Develop and maintain informative, useful and accessible career development and networking solutions for students and young professionals. • Develop and maintain strong relationships with Australasian tertiary education providers offering spatial and surveying qualifications. • Influence government policy and legislation with respect to the profession. 	Donny Darwaman (Chair)
DISASTER MANAGEMENT & RECOVERY	
Our Priorities <ul style="list-style-type: none"> • Build a well-coordinated national network of surveying and spatial professional volunteers (organisations and individuals) able to respond to immediate disaster recovery needs. • Provide leadership and coordination for volunteer surveying and spatial information activities. • Develop a strategy and establish a framework that will stimulate and coordinate volunteer surveying and mapping disaster recovery efforts in the event of future disasters. • Adopt policies and standards for volunteer data collection that are interoperable with the needs of government and academia. • Consult with government and academia to determine data needs and priorities on all collaborative projects. 	Lesley Arnold (Chair)
SPATIAL DIGITAL TWINS	
Our priorities <ul style="list-style-type: none"> • Encourage and promote the advancement of SDT knowledge. • Establish SSSI as an effective, trusted and well recognised organisation and hub for surveying and spatial sciences and other Digital Twin experts in Australia. • Facilitate inclusive and collaborative partnerships – locally, nationally and globally. • Foster and strengthen information sharing among SDT-SIG Member Agencies, and with government, community, industry and private sectors. • Enable access to information collected and shared by participants including knowledge of what information exists, and how and where to find it. 	Wayne Patterson (Chair)

Our Regions

Our regions are supported by many exceptional volunteers who co-ordinate many CPD and networking opportunities for our members. We thank our committee members for the contributions they make in support of SSSI and our wider profession.



PROPOSED MERGER

Over the past year, SSSI has been consulting with members and the wider surveying and spatial sector regarding a proposed merger with the Spatial Industries Business Association (SIBA|GITA). When discussing the potential merger both SSSI and SIBA|GITA Boards have been guided by the following principles:

1. How can we provide the best value to our members and the greater geospatial sector?
2. How can we as the representative groups for individuals and companies most effectively champion change?
3. How can we reform within our industry which is undergoing rapid growth and advancing technology?

Our members and the wider surveying and spatial community have been consulted with widely regarding the proposed merger. A number of online forums were held where members were able to hear of the advantages of both SSSI and SIBA|GITA merging to form a proposed new peak industry body representing geospatial professionals and organisations. These forums also provided an opportunity for members to ask questions.

In May, SSSI held an Extraordinary General Meeting (EGM) where members were given the opportunity to vote on several Resolutions to endorse the SSSI Board and Management to continue preparations for the merger.

The resolutions included:

1. Changes to be made to the SSSI Constitution which would enable SSSI to amalgamate with another body or group, to take any gift of property and to transfer or purchase assets, property, liabilities etc if SSSI is authorised to amalgamate with another body.
2. In principle approval for the amalgamation of the Institute with SIBA|GITA.
3. SSSI Directors and Management to gain legal and financial advice in preparation of a potential amalgamation.

The vast majority of members attending the EGM voted in favour of the proposed changes to be made to the SSSI Constitution and approved SSSI Board and Management to continue discussions with SIBA|GITA for a potential merger to occur.

It is important to note, this was not a binding vote for the merger to proceed. This vote gave the SSSI Board and Executive members approval to continue planning for a possible merger with SIBA|GITA.

At the November 2022 AGMs, both SSSI and SIBA|GITA members will be voting on a proposed merger of SSSI and SIBA|GITA and for the formation of a proposed geospatial peak body.



PROFESSIONAL DEVELOPMENT AND CERTIFICATION

Webinars

Once again proving very popular, SSSI continued to host webinars during the year. Over 50 webinars were held showcasing national and international speakers discussing relevant topics of interest to the spatial and surveying professions. Our webinars provide technical content, help develop soft skills and provide opportunities to share knowledge. Members were able to hear from a range of national and international experts, at no cost.

We were proud to partner with the Open Geospatial Forum for the *New Space Workshop: How can we build space from scratch*. This online forum highlighted how rapidly the space community was growing in Australia and how to capitalise on its emerging interest and success.

Members are welcome to view upcoming webinars and other events on the [SSSI website](#). An extensive [eCPD](#) back catalogue is available online. Due to the popularity of the SSSI webinars, they will continue in the future.

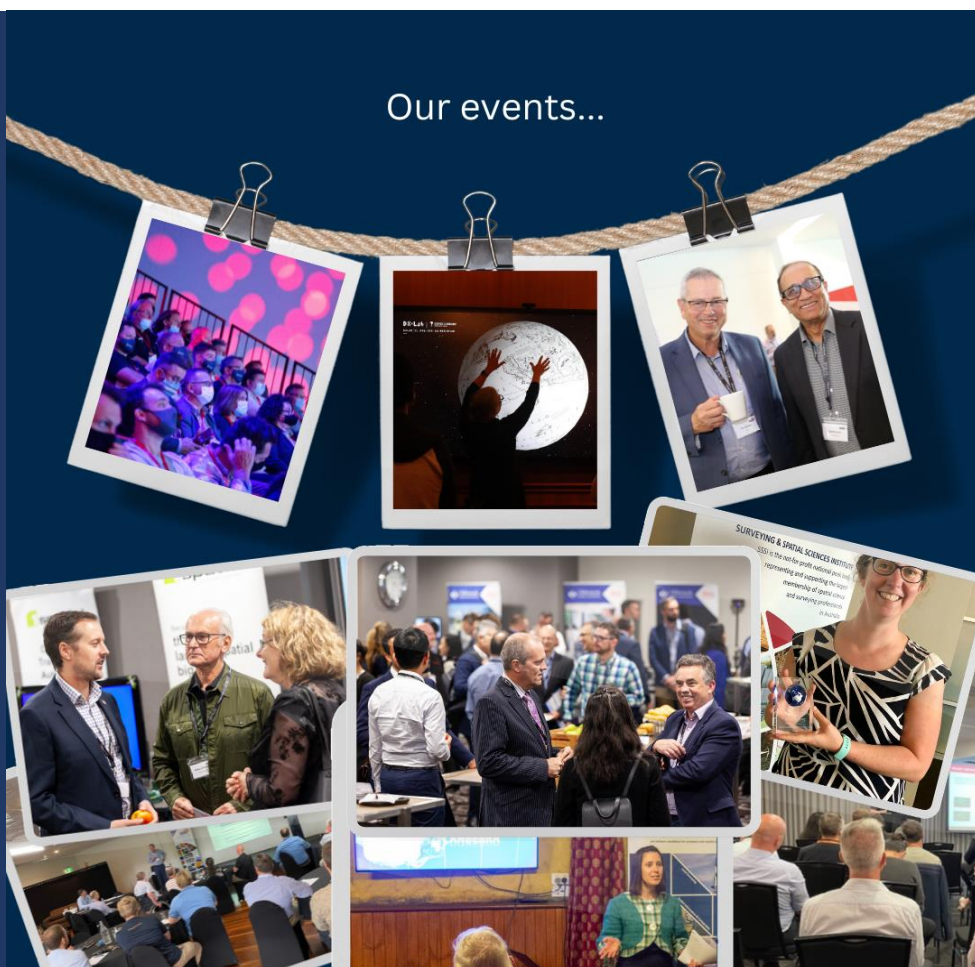
Face to Face events

This financial year saw the return of many SSSI face to face events. It was pleasing to see the return of many favourite industry events including Spatial Information Day (SID) in Adelaide, the International Women's Day breakfast in Victoria and the Brisbane Winter Seminar, just to name a few. Nearly 40 face to face events were held over the financial year. With COVID restrictions reducing in most States and Territories, we look forward to delivering more events in 2022 and beyond.

Event highlights include:

- State Library of Victoria Map Collection Tour
- Cairns Winter Seminar
- WA Digital Twins in 2021 Seminar
- 2021 Tasmania Surveying & Spatial Conference
- Spatial Information Day 2021
- Speed Networking in Hobart, Tasmania and Adelaide
- WA Regional Summit
- Fellows Lunch (Vic) and Dinner (WA)
- Qld Regional Conference
- International Women's Day Breakfast, Melbourne
- SA GIS in Local Government Seminar

Our events...



Locate22

Locate22 was held in Canberra from 24-26 May with over 750 people attending this epic three-day event. Once again returning to the full face to face format, attendees were treated to a comprehensive line-up of speakers discussing the latest topics and technologies, plus many hub sessions and workshops.

A new addition to Locate22 was the Young Professional grants. Through the support of Geoscience Australia, AGO, Spatial Vision, Mercury Project Solutions, Map Gear, Beveridge Williams and RPS, Locate was able to provide financial assistance to seven YPs so they could attend Locate22.

A big thank you to Conference Convenor Alison Rose, Program Chair Hannah Martin, the Program Committee, Conference Manager Alicia Smith and all the sponsors and exhibitors. Thanks to Platinum Sponsors Esri Australia, Geoscape, Nova Systems and Satellogic for their support and participation.

We look forward to [Locate23](#) in Adelaide from 10 – 12 May 2023.



Hydrographic Coaching Program

This year SSSI launched the Hydrography Commission Coaching Program (HC-CP). The HC-CP aims to encourage young professional hydrographic surveyors to work towards certification, be involved in the industry and Commission, and network with other professionals.

More specifically, the program will ensure that trainees working towards certification have identified knowledge gaps and addressed them prior to the panel assessing their application for certification. The coaching will provide guidance on how best to remediate these gaps.

Those participating had to be a current SSSI or S+SNZ member who resides in Australia or New Zealand. Coaches also had to be a current Certified Professional Hydrographic Surveyor at Level 1 or Level 2 with a minimum of four years of experience. Trainees of any level were invited to participate.

In its first year, 11 coach/trainee pairs participated in the program. Those participating benefitted greatly from being part of the program.

SSSI YPs National Mentoring Program

Now in its fifth year, hundreds of surveying and spatial professionals have participated in the SSSI YP Mentoring Program and achieved considerable personal and professional growth. This year, the program was generously sponsored by The Surveyors' Trust.

SSSI strives to serve its members by strengthening the Australian surveying and spatial industry through the intergenerational transfer of knowledge, experience and inspiration for a brighter future in a global context. The YP Mentoring Program is an important way of supporting the future of our profession.

Mentoring is a two-way process, as the mentee often shares a new perspective to the mentor, and the mentor often learns more about themselves through the process.

The Mentoring Program was open to both members and non-members in the Asia-Pacific Region. A total of 105 mentors and 160 mentees participated in the program, with 71% being male and 29% being female. Participants studied the following disciplines:

- **44% - Spatial Information & Cartography**
- **24% - Land Surveying**
- **15% - Remotes Sensing & Photogrammetry**
- **10% - Engineering & Mine Surveying**
- **5% - Hydrography**
- **2% - Geodesy & Positioning**

The Mentoring Program ran for just over 20 weeks where the teams explored six different topics of their choice. The aim is to build soft skills and share knowledge.

Student Networking Program

This was the pilot year for the SSSI Student Networking Program which enabled Australian surveying and spatial university and VET students to work in groups to help support students as they begin to consider their career paths in the industry. An early career professional acted as a mentor for each of the student groups.

The groups included around 10 people: 7 to 8 students along with 2 to 3 graduates. The participants were from varying institutions and worked through a structured series of topics. In its first year, around 40 students participated.

Review of the National Standard of Competency for Licensed / Registered Surveyors

The Council of Reciprocating Surveyors Boards of Australia and New Zealand (CRSBANZ) have a commitment to the principle of mutual recognition of professional registration between the jurisdictions of all Australian States and Territories and New Zealand since 1892. By 1 July 2022, a new national Automatic Mutual Recognition of Occupational Registration (AMR) scheme will be in operation in most jurisdictions. This has provided impetus for CRSBANZ to work towards legislative and administrative reforms that will progressively eliminate jurisdictional differences.

The project to establish a National Standard of Competency for Licensed or Registered Surveyors builds on recent CRSBANZ research projects to establish surveying degree qualifications and review of different competency assessments enforced by the various boards prior to accepting graduates for registration.

SSSI hosted a webinar and prepared a written response to the review which is [available for download](#). In summary, SSSI strongly believes that a recognised national competency framework for Cadastral Surveyors is essential.



Certification

In addition to certification of hydrographic surveyors, which SSSI jointly sponsors with Surveying + Spatial New Zealand, SSSI currently manages three other certification programs. The following gives details of each of these programs and acknowledges those achieving certification during the past financial year.

General Certification

In SSSI, expertise is acknowledged at a general level through General Certification. The General Certification process requires a professional to demonstrate their expertise through either a combination of tertiary qualifications and professional experience or professional experience on its own standing. Additionally, a commitment to a Code of Ethics is required.

New General Certified Practitioners (FY2021/2022)

Mahir Dogan		Christian Davies		James O’Kane		Cheuk Hon Ng		Joao Diniz
-------------	--	------------------	--	--------------	--	--------------	--	------------

Geographic Information Systems Professional (Asia Pacific) (GISP-AP) Certification

Spatial information & cartography expertise is acknowledged under the internationally recognised GISP-AP Certification. The GISP-AP Certification process requires a professional to initially demonstrate that an advanced level of expertise has been achieved, including completion of a formal tertiary education in a particular spatial science discipline, achievement of further relevant professional experience and contributions to the profession.

New GISP Certified Practitioners (FY2021/2022)

Jarrod Lange		Subodh Dhakal		David Tran		Matthew Emerson
--------------	--	---------------	--	------------	--	-----------------

Engineering Surveying Profession - Australasia Pacific (ESP-AP) Certification

Under the ESP-AP Certification, the process requires a professional to initially demonstrate that an advanced level of expertise has been achieved, including completion of a formal tertiary education in a particular spatial science discipline, achievement of further relevant professional experience and contributions to the profession.

New ESP-AP Certified Practitioners (FY2021/2022)

Justin Peatey		Luke Carmichael		Neil Mellon		Leigh Staunton		Benjamin Tancred
Matthew Daley		Nicholas Hamilton		Jennifer Divers		Jay Argent		Jordan Sempf
Alexander Woods		Sean Kernke		William Fairbairn		Peter Close		Hugh Jakins
		Trent Mathews		Steven Wilson				

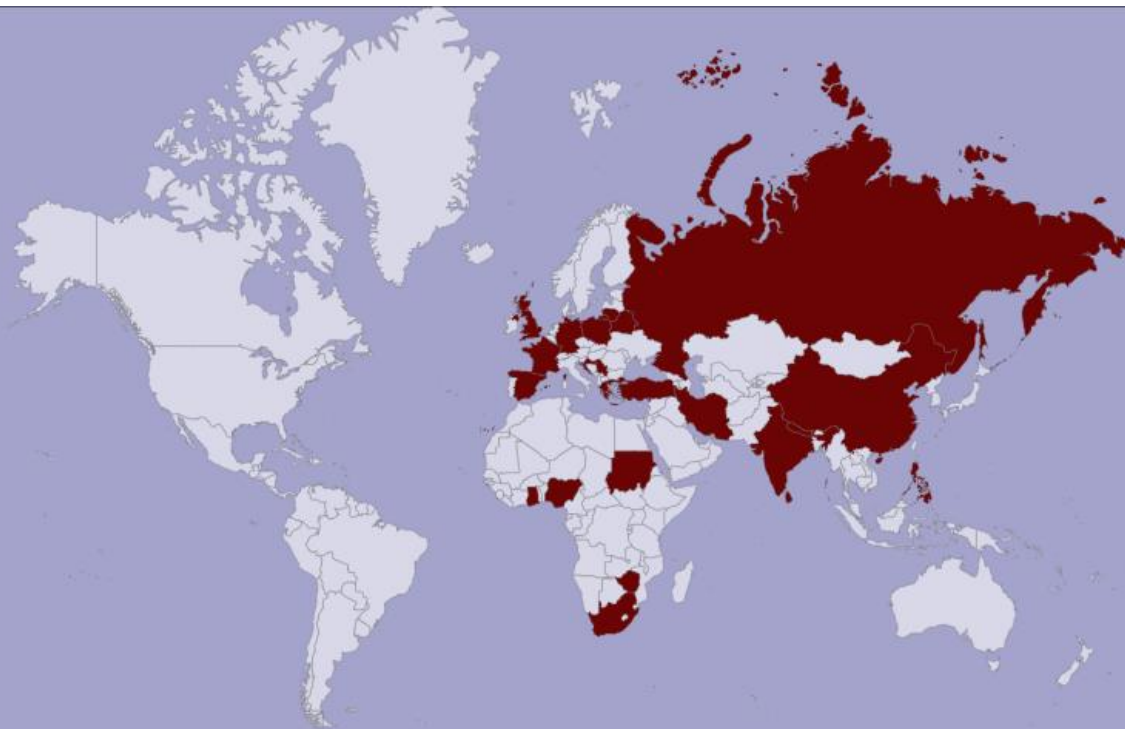
Migration Assessment

SSSI is the professional body appointed under the Migration Act to evaluate overseas qualification assessments for surveyors on behalf of the Federal Government's Department of Education, Employment and Workplace Relations.

SSSI is the authorised assessing authority to assess qualifications and skills for the purpose of migration to Australia under the general skilled migration categories for the occupation of Surveyor ANZSCO 232212 ONLY (i.e. applicants must hold the equivalent of an Australian bachelor degree).

For the 2021/2022 period, SSSI undertook 103 migration assessments from 25 countries. Of this, 67 were deemed acceptable and 33 renewal applications were processed. Two applications were rejected and the final application is still waiting assessment.

Belarus | China | Croatia | Egypt | France | Germany | Ghana | Greece | Hong Kong | India | Iran
Lithuania | Nepal | Nigeria | Philippines | Poland | Russia | Serbia | South Africa | Spain | Sri Lanka
Sudan | Turkey | United Kingdom | Zimbabwe



COLLABORATION & PARTNERSHIPS

Sustaining Partnerships

SSSI acknowledges that our work cannot be done in isolation. SSSI values the strong relationships it has with its Sustaining Partners.

NATIONAL SUSTAINING PARTNERS

Gold Partners



Silver Partner



Bronze Partners



Education Partners



HYDROGRAPHY COMMISSION SUSTAINING PARTNERS



REGIONAL SUSTAINING PARTNERS

QUEENSLAND



AUSTRALIAN CAPITAL TERRITORY



ACT
Government



ACT
EMERGENCY
SERVICES
AGENCY

VICTORIA



MONASH
University

TAYLORS
Relationships | Expertise | Solutions



TASMANIA



SOUTH AUSTRALIA



NEW SOUTH WALES



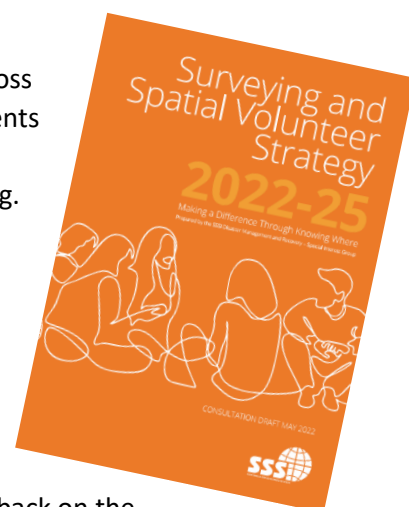
Surveying & Spatial Volunteer Strategy

SSSI, through the Disaster Management & Recovery Special Interest Group launched the Surveying & Spatial Volunteer Strategy 2022-2025. [Click here to view the Strategy](#)

We have taken this initiative to facilitate surveying and spatial volunteerism across Australia and globally. The purpose of this document is consultative and represents the first stage in seeking broader input and support for a volunteer program targeted at using surveying and spatial skillsets for community resilience building.

The aim is to work with existing volunteer organisations and networks to provide opportunities for our members and the surveying and spatial sector more broadly. For many members, the pathways to volunteering are not clear, and the time critical nature of some activities means that opportunities are often missed. There is also a lack of national coordination, and a disconnection between available volunteering opportunities and peoples' interests.

Members of the geospatial community were invited to review and provide feedback on the Strategy.



SPACE+SPATIAL

In 2021 a coalition of leading Australian space and spatial organisations co-convened a series of dialogues for space, surveying and spatial professionals to develop the Space+Spatial Industry Growth Roadmap 2030 which facilitates accelerated mutual growth of these industries looking out to 2030. SSSI is proud to be part of the Space+Spatial conversation.

During 2020 an expert group compiled the *SPACE+SPATIAL Industry Growth Roadmap 2030* – a national snapshot that's about to be launched for our profession to better understand the bold new future that's rapidly approaching and what it means for you and your career, your organisation and all of Australia.

In late 2021, a Space+Spatial Industry Growth Roadmap 2030 Consultation Paper was released for comment. The consultation paper sought feedback on actions that can be taken over the coming decade to accelerate the shared growth of the space and spatial industries. SSSI and SIBA|GITA hosted a number of online SPACE+SPATIAL Industry Dialogues which encouraged members of the geospatial community to get together and provide feedback on the Consultation Paper.

The final SPACE+SPATIAL Industry Roadmap will be released in early 2023.



SSS-DLN and Research Steering Committee - Inclusion @ Work Index

In late August 2021, the surveying, spatial and space sector community participated in the Diversity Council Australia's inaugural Inclusion@Work Index survey. The purpose of the survey was to establish a baseline to help us understand the current state of diversity and inclusion within space, spatial and surveying workforce across Australia and New Zealand.

SSSI was proud to be one of the eight industry leaders who partnered to encourage individuals who either worked, studied or participated in the space, spatial or surveying sector to complete the Inclusion@Work Index survey.

The Inclusion@Work Index covered three broad areas:

1. The diversity demographics of respondents, compared to the 'Australian workforce' as derived from findings from a nationally representative survey of 3000 Australian workers.
2. Respondent's experience of inclusion, broken down into diversity cohorts, business, government and academic groups and compared to the Australian workforce.
3. The impact of inclusion on performance and wellbeing.

Over the period of six weeks, over 1000 people participated in the inaugural study. Of the 1,070 participants, 37% are female and the median age is 44 years. 37% of respondents were born overseas speaking 70 different languages and represent over 100 cultural backgrounds. 8% of respondents are people with a disability and 10% identify as LGBTIQ+.

As a data-driven industry, the results from the Inclusion@Work Index highlights the areas we are doing well, provides an evidence-base for the impact that inclusion can have on productivity and innovation and helps identify where we fall short of national benchmarks



[Inclusion@Work Index report](#) was released in early 2022.

Australia to host ISPRS Commission IV

In June 2022, SSSI was successful in supporting a bid for Australia, as an ISPRS Member, to host the International Society for Photogrammetry and Remote Sensing **Technical Commission IV Spatial Information Science** for the period of 2022-2026. The President of the Commission will be SSSI Member Professor Sisi Zlatanova from the University of New South Wales.

SSSI will host their mid-term symposium, attracting photogrammetrists and remote sensing professionals from across the globe. The event will be in Perth in October 2024.

IGARSS 2025 to be held in Brisbane

In late 2021, it was announced that the International Geoscience and Remote Sensing Symposium (IGARSS 2025) would be held in Brisbane, Australia, July 27–August 1, 2025, at the Brisbane Convention & Exhibition Centre. As a member of IGARSS, we are proud to be supporting this event.

The theme for IGARSS 2025 is 'One Earth' – addressing threats and promoting collaborative global solutions. The General Co-Chairs of IGARSS 2025 are Prof. Xiuping Jia (University of New South Wales) Prof. Jeffrey Walker (Monash University) and Prof. Jocelyn Chanussot (Grenoble Institute of Technology).

RECOGNITION & CELEBRATION

Fellowships

The SSSI may confer, from time to time, on individual members of SSSI the title of *Fellow* or *Honorary Fellow* of the Institute. These titles are conferred to individuals that have made a significant contribution to the Institute or to the Profession. The following members were conferred during 2020/2021.



Geoffrey Robb, FSSSI

Date conferred: 27 October 2021

Geoff Robb's surveying career started with the WA Department of Lands and Surveys and it was in 1995 Geoff formed RM Surveys with his business partner. Geoff has continuously supported the development of the next generation of surveyors. He regularly volunteers as a mentor for Curtin University's two-week surveying expedition to an outback area of WA and within his own company he also actively engages in the mentoring of students through its own graduate program.

Geoff is also passionate about giving back to the community. Following the recent devastating bushfires in the Perth hills, Geoff initiated a program to help landowners by re-establishing their property boundaries, so that replacement fencing could be correctly located. In 2019 Geoff was awarded the WA APSEA Professional of the Year for his outstanding contribution to the surveying profession.



Lesley Arnold, FSSSI

Date conferred: 27 October 2021

Dr Lesley Arnold has over 35 years' experience in spatial information management and extensive knowledge in spatial data supply chains and enterprise systems. She is internationally recognised as a thought leader for the advancement of spatial infrastructures and spatial government models. For many years her expertise has been called on to develop strategies and action plans for strengthening geospatial information in Australia as well as Internationally.

Dr Arnold is an active Member of the UN-GGIM Legal and Policy Frameworks Working Group and has made a significant contribution to the development of documentation for the Integrated Geospatial Information Framework. Dr Arnold is currently the President-elect for SSSI and Chair, SSSI Disaster Management and Recovery Special Interest Group.



Mary Rabling, FSSSI

Date conferred: 10 March 2022

Mary Rabling has over 35 years' experience in surveying and spatial and is a recognised leader in the profession. She is an inspiration to young graduates, particularly women and was one of the first women to achieve Cadastral endorsement in Victoria. Mary is a foundation member of SSSI and was an active participant on our Vic Region Committee from 2005 to 2011 serving as Chair in 2007.

Mary has been on the Land Surveying Commission Victoria from its inception and has been the SSSI representative on the Survey Task Force. Mary's contribution to SSSI and the wider profession has been enormous and will continue long into the future.



Malcolm McCoy, HFSSSI

Date conferred: 10 March 2022

Malcolm McCoy has had a stellar 40-year career in surveying and spatial with more than 25 years' experience in senior management roles. His areas of expertise are land and engineering surveying along with strategic planning, project management and financial management. Malcolm is a past President of ISA and was instrumental in the merger of ISA and SSI for the creation of SSSI during his Presidency.

Malcolm continued as a Director with SSSI and was the Treasurer from 2003-2004. He was also an Assistant Congress Director with both the FIG Congress Melbourne 1994 and the FIG Congress Sydney 2010.

Asia-Pacific Spatial Excellence Awards

These awards celebrate the outstanding achievements of individual surveying and spatial professionals across the oceanic region. National winners were presented their award at the virtual APSEA Awards ceremony.

2021 APSEA Individual Winners

	Professional of the Year	Future Leader of the Year	Diversity & Inclusion	Educational Development	Postgraduate Student	Undergraduate Student	VET Student
ACT						Krystal Dacey	
NSW	Maurits van der Vlugt	Roshni Sharma	Austin Pepper		Oliver Lock	Rick Carruthers	Jason Hanckel
NZ	Stuart Caie	Louisa Bloomer			Omid Khazaeian		
QLD				Dr Zahra Gharineiat			
SA	Mark Deuter	Jennifer Brindle		David Bruce	Amelie Jeanneau	Gemma Sansom	
TAS	Inga Playle		Julian Gill		Poorima Sivanandam		
VIC	Kellie Dean	Jason Heritage	Nicole Kiely		Xiaoji Shen		Harry Wade
WA	Paul Kennedy	Dr David Belton	Andrew Dowding	Todd Robinson	Dr Heng Zhou	Pearl Ontse	

**Blue highlight indicates National Winner*

SSSI President's Award

SSSI President's Award is an annual award made at the President's discretion. It is recognition for those who have provided an exemplary service to the institute or to the profession.

2021 President's Award Recipient – Amelia Davies

SSSI Eminence Award

The SSSI Eminence Award is conferred to an individual who has made a significant national or international contribution to the spatial sciences and/or is materially advancing the practice and profession of the spatial sciences.

2021 Eminence Award Recipient – Greg Scott

Hydrographic Excellence Award

The 2020/21 Hydrographic Excellence Award was presented to **Schmidt Ocean Institute (SOI)**.

The SOI's RV Falkor expeditions to Australia during 2020 was testament to endurance in overcoming the significant challenges brought on by the pandemic, to allow sustained mapping expeditions in remote Australian waters through the use of advanced technologies, innovative crewing practices and data sharing, and excellent outreach communications.

2021 APSEA Industry Winners

Environment and Sustainability

WA | NGIS Australia | Sustainable Sourcing Platform

NSW | Snowy Hydro & Jacobs | Landslide Susceptibility Assessment

NZ | Auckland Council, Geographic Business Solutions (GBS) | Ruru - Conservation Information System

Pacific | Queensland University of Technology, Accenture Australia, Palau International Coral Reef Centre, Wildlife Conservation Society Fiji, Marine Ecology Consulting, University of the South Pacific | ReefCloud

QLD | GP One Consulting and Great Barrier Reef Foundation | GBRF Water Quality Improvement Platform

SA | Aerometrex, The City of Unley | Mapping changes to the City of Unley's Urban Forest from 2018 - 2021 using LIDAR.

VIC | Department of Environment, Land, Water and Planning, Frontier SI and Orbic | Vicmap vegetation

Spatial Enablement

WA | State Records Office Western Australia | RetroMaps

ACT | Department of Infrastructure, Transport, Regional Development and Communications, Geoplex, Transport Certification Australia | National Freight Data Hub

NSW | Valuer General NSW, Spatial Services NSW, CarbonLink, FrontierSI | Land Unit Classification System for Rural Valuation

NZ | Stantec, Tauranga City Council | Asset Resilience Management Tool

QLD | GP One Consulting and Great Barrier Reef Foundation | GBRF Water Quality Improvement Platform

SA | Tonkin and Port Pirie Regional Council | Port Pirie Regional Council Patrol Grading Applications

TAS | Hydro Tasmania | Battery of the Nation

VIC | ISpatial Australia | ACDC Validation Portal

Award for Community Impact

WA | Department of Health WA | COVID-19 Dashboards

NSW | NSW State Emergency Service | Geospatial Intelligence - Informing community decisions in March 2021 Floods

NZ | Te Kāhui Manu Hōkai, Journey GIS Ltd | Ngā Poutama Matawhenua | Practical Māori GIS Mapping Wānanga

QLD | StarSapphire Productions & QUT VISER | GroundTruth: Trace Touch Feel the Brisbane River

SA | Tonkin and Kangaroo Island Council | Kangaroo Island Fire Damage Assessment 2020

Workforce Development & Inclusion

WA | NGIS Australia & Winyama | IMW On Demand

International Partnership

WA | NGIS Australia | GEO Google Earth Engine Programme

ACT | Geoscience Australia, FrontierSI, NGIS, COOI Studios | Digital Earth Africa Industry Engagement and Capacity Development Programs

Technical Excellence

ACT | Geoscience Australia, FrontierSI, Australian Hydrographic Office | AusSeabed Survey Coordination Tool

NSW | Geoplex, Australasian Fire and Emergency Services Authorities Councils (AFAC), NSW Rural Fire Service (RFS), Bureau of Meteorology (BoM) | Australian Fire Danger Rating System (AFDRS)

NZ | Critchlow Geospatial | SwitchMyFleet

QLD | Bennett + Bennett & TMR | Cunningham's Gap

SA | Aerometrex | City-wide AI-derived ground surface permeability classification, Adelaide, South Australia

VIC | DELWP Land Use Victoria and Department of Customer Service Spatial Services division | NSW-Victorian Border Spatial representation Project

Innovation - Small Business

NZ | Fox and Associates | Tasman District River Surveys

QLD | Land Solution Australia and University of Southern Queensland | LSA UAV Ortho-Cloud

SA | GP One Consulting | Landscape Online Information System

Innovation - Medium to Large Business

NSW | NSW Department of Customer Service | Cadastre NSW

NZ | Christchurch City Council | Asset Assessment Intervention Framework (AAIF)

VIC | Aerometrex | Greening Melbourne

**Yellow highlight indicates National Winners*

JK Barrie Award

The JK Barrie Award is presented to the best Industry Project for 2021.

JK Barrie Award Winner - Winyama & NGIS



SSSI NATIONAL BOARD



Paul Digney, National President

Paul Digney is the Survey Technical Director for Jacobs Australia and is a licensed surveyor in Tasmania and Victoria with over 25 years' experience in the surveying/spatial profession. Paul has shared his employment equally between public and private sector roles with a strong focus on geodetic/cadastral surveying and more recently 3D laser scanning, digital engineering and strategic consulting.

Lesley Arnold, President-elect and Director – WA (resigned 31 May 2022)

Dr Lesley Arnold is the Director for Geospatial Frameworks. She works with governments to develop strategies, policies and implementation plans for spatial information reform, open data initiatives and spatial innovation globally. Lesley currently works with the United Nations and World Bank supporting countries to strengthen their geospatial information management capabilities towards implementing the 2030 Agenda for Sustainable Development



Darren Mottolini, Director – WA (appointed 20 June 2022)

A recognised leader within the spatial community for leading spatial strategies, implementation plans and advising on best practice for the delivery and use of data spatial in many industries. Darren has worked as a lead consultant for both Australian and International Governments, the private sector and academia. Darren has recently returned to Landgate where he will take the lead in delivering Spatial WA, a digital twin framework for the State of Western Australia and has recently been appointed to the SSSI Board.



Dale Atkinson, Director – QLD (resigned 31 January 2022)

Dale Atkinson is a cadastral surveyor that runs a small rural based practice, Atkinson & Booy Surveys in North Queensland. Dale has enthusiasm, energy and understands the need to always provide exceptional customer service to his clients both big and small. He is one of the youngest to acquire his Certificate of Registration with Consulting Endorsement with the Surveyors Board of Queensland.



Peter James, Director – QLD (appointed 15 March 2022)

Peter is a qualified surveyor and has a range of experience and expertise that makes him a versatile IT professional. He is an accomplished senior IT manager who has a clear understanding of how IT influences and enhances both private and public organisations' business goals. Peter is currently the Business Development Manager at Cohga, an Australian company with a focus on the development of IT products and the provision of associated professional services.



Wayne Patterson, Director – NSW

Wayne is the Director of Spatial Operations for NSW Spatial Services and has 20 plus years' experience in the spatial industry covering a range of disciplines from Operations to Strategy and Policy development. Some of Wayne's achievements include the establishment of the NSW Common Spatial Information Initiative (CSI2i), the establishment of the NSW Spatial Council now Location Leadership Group and Industry Advisory Group, led the development and delivery of the NSW Location Intelligence and Location Plus strategies.



**Nicholas Brown, Director – ACT**

Nicholas is the Director of National Geodesy at GeoScience Australia, co-Chair of the UN-GGIM Subcommittee on Geodesy, a member of the Intergovernmental Committee on Surveying and Mapping, Chair of the ICSM Geodesy Working Group and a member of FIG Commission 5. Nicholas is responsible for the development and refinement of the Australian Geospatial Reference System; the collection of datums, geoid models, transformation tools and standards required for 4D positioning.

Michael Gear, Director – SA

Michael is a Director of Adelaide based Surveying Firm, Michael Gear Surveys. With extensive experience across South Australia and several years in the Northern Territory, covering all areas of surveying from Engineering and Licensed surveying, Terrestrial Laser Scanning and the Land and Property development,

**Inga Playle, Director – Tasmania**

Inga is a Spatial Information Specialist at Hydro Tasmania. She is passionate about using spatial information to help solve problems, make better decisions, save time by streamlining workflows and ultimately save businesses money. She has an in-depth understanding of spatial sciences and extensive knowledge and experience in the capture of spatial data, as well as spatial data management, spatial data analysis, web GIS applications and data output.

Andrej Mocicka, Director – Victoria

Andrej is the Country Manager, Australia for 1Spatial. He is a proven business development/sales professional with extensive experience as a Sales & Business Development Manager together with business analysis and marketing skills. Andrej has a demonstrated history of working in the surveying and spatial industry with a strong professional skill-set and experience.

**Neil Hewitt, Director – Hydrography**

Neil has over 30 years' experience in the hydrographic industry with 12 years in the Royal Australian Navy and 22 years in the commercial sector. Neil is an AHSCP Certified Level 1 Hydrographic Surveyor and holds an MSc in Hydrography from the University of Plymouth in the UK.

Zaffar Sadiq Mohamed-Ghouse, Company Secretary

Dr Mohamed-Ghouse is the Executive Director for Strategic Consulting & International relations at Spatial Vision. He has 21 years of experience in project management, business development and the design, development and management of spatial databases. Zaffar is also the Australian representative at ISO Technical Committee 211 (Geospatial Information) and is active with United Nations Global Geospatial Information Management.

**Tony Wheeler, Chief Executive (ex officio)**

Tony Wheeler holds degrees in geospatial science and business administration. His experience includes senior roles with large engineering consulting firm, Sinclair Knight Merz - now Jacobs, that included 12 years as a senior partner, initially heading their geospatial business unit, and later major international projects and mergers and acquisitions. smaller consulting firms, State and Commonwealth Government agencies, and information technology companies.



SURVEYING & SPATIAL SCIENCES LIMITED

ABN 22 135 572 815

27-29 NAPIER CLOSE
DEAKIN ACT 2600

TELEPHONE: +61 2 6282 2282

EMAIL: INFO@SSSI.ORG.AU

WEB: WWW.SSSI.ORG.AU